

TECHNICAL DATA SHEET

BLACK FIBERGLASS SPORT MAT



WATCH

VIDEO

BLACK SPORTMAT

Warmset's **Black** technology has an outer covering in the form of a **polypropylene sheath**. This property allows the underfloor heating system to cover even **large surfaces** and makes it suitable both for home heating and for heating industrial warehouses, greenhouses, crops and sports fields.

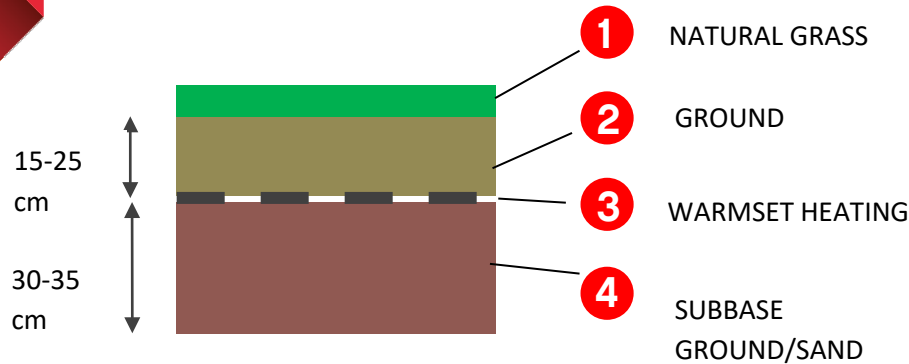
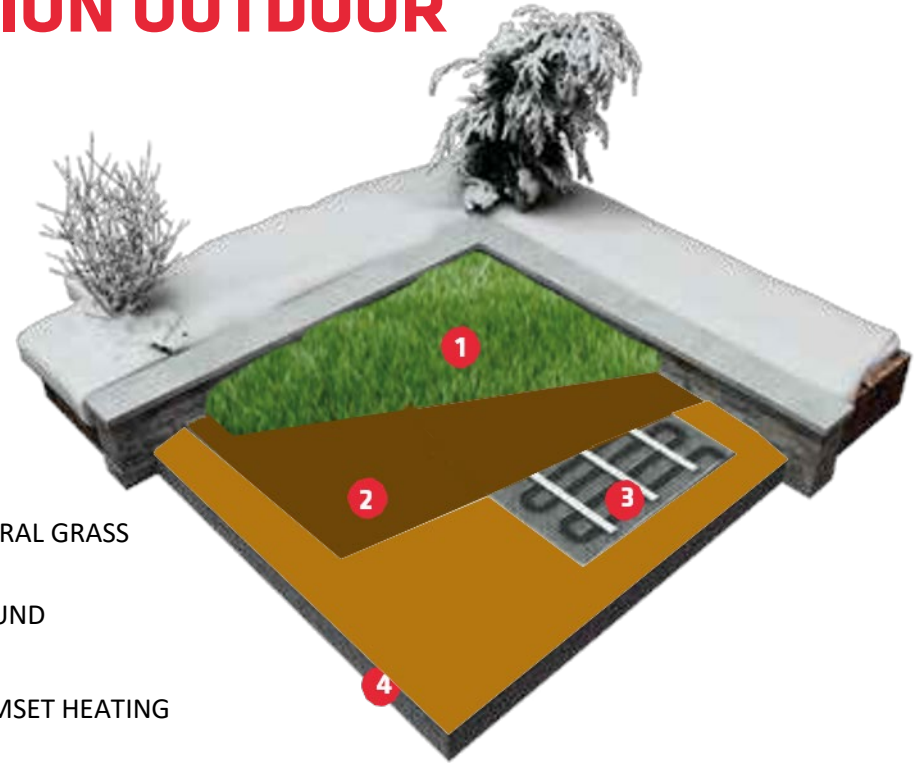
The **ribbon is** covered completely by an EVA layer, that provides mechanical strength and waterproof resistance to conductor. The conductor is laid on a **PE mesh** where the EVA layer is stucked by a thermoforming process.

This create a **strong** conductor, **easy to install** just unrolling the mat. Every mat can have from 2 to 8 lines.



TYPE OF INSTALLATION OUTDOOR

UNDERNEATH NATURAL GRASS FIELD

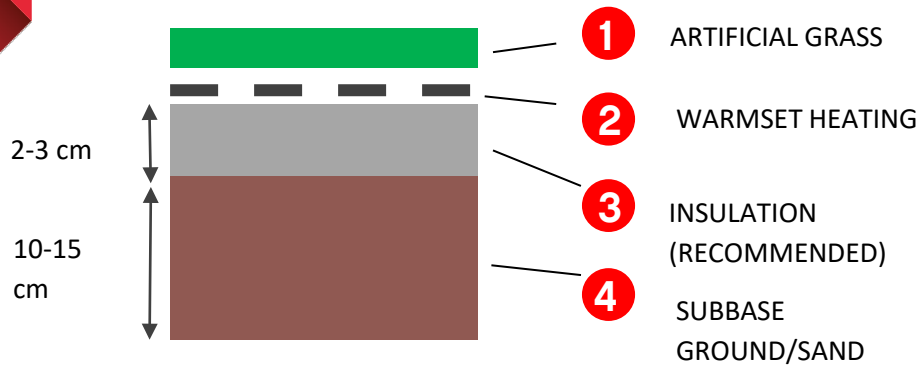


WARRANTIES AND CERTIFICATIONS



TYPE OF INSTALLATION OUTDOOR

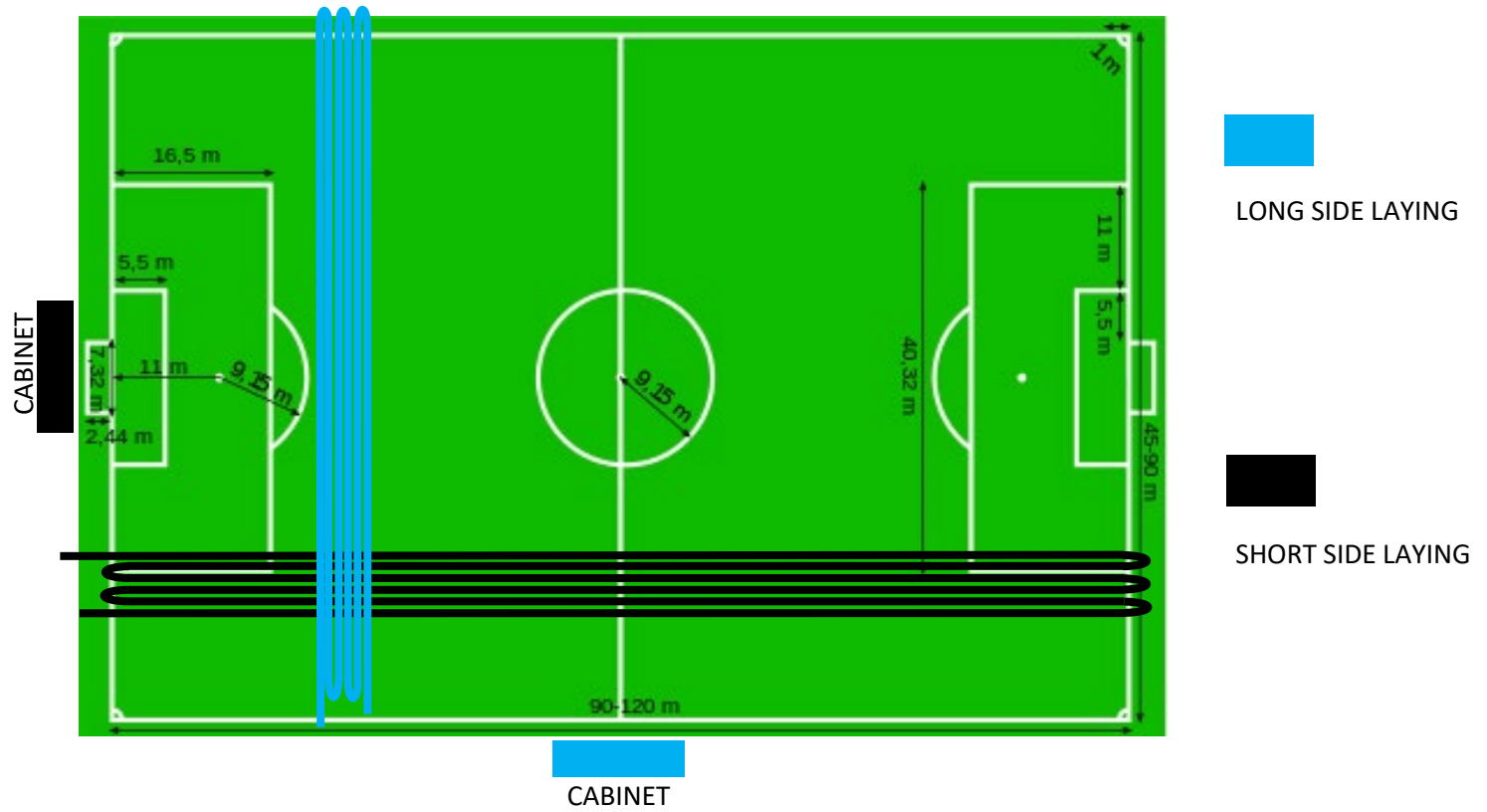
UNDERNEATH ARTIFICIAL GRASS FIELD



WARRANTIES AND CERTIFICATIONS



STANDARD FIELD SIZE



FEATURES OF SINGLE MAT (standard field 68x106 m)

COVERED AREA (m ²)	SIZES (m)	TOTAL POWER
33,75 m ²	0,5 x 68 m	3375 W

FEATURES OF WHOLE FIELD

COVERED AREA (m ²)	SIZES (m)	TOTAL POWER
7000-7500	70 X 106 m	700-750 kW

For natural grass we have the possibility to keep higher distance ribbon to ribbon. In this way we can lay down 1 m mat, with 4-6 ribbon stripes, covering more space and saving money for installation and material. The power/m for natural grass goes between 15 to 18 W/m (keeping from 90 to 100 W/sqm the density power). The average distance ribbon to ribbon for artificial grass goes from 6 to 8 cm.

	NATURAL GRASS	ARTIFICIAL GRASS
POWER/ m	15-18 W	8-10 W
DISTANCE RIBBON/RIBBON	10-20 cm	6-10 cm
POWER/m ²	90-100 W/m ²	

TECHNICAL ADVANTAGES

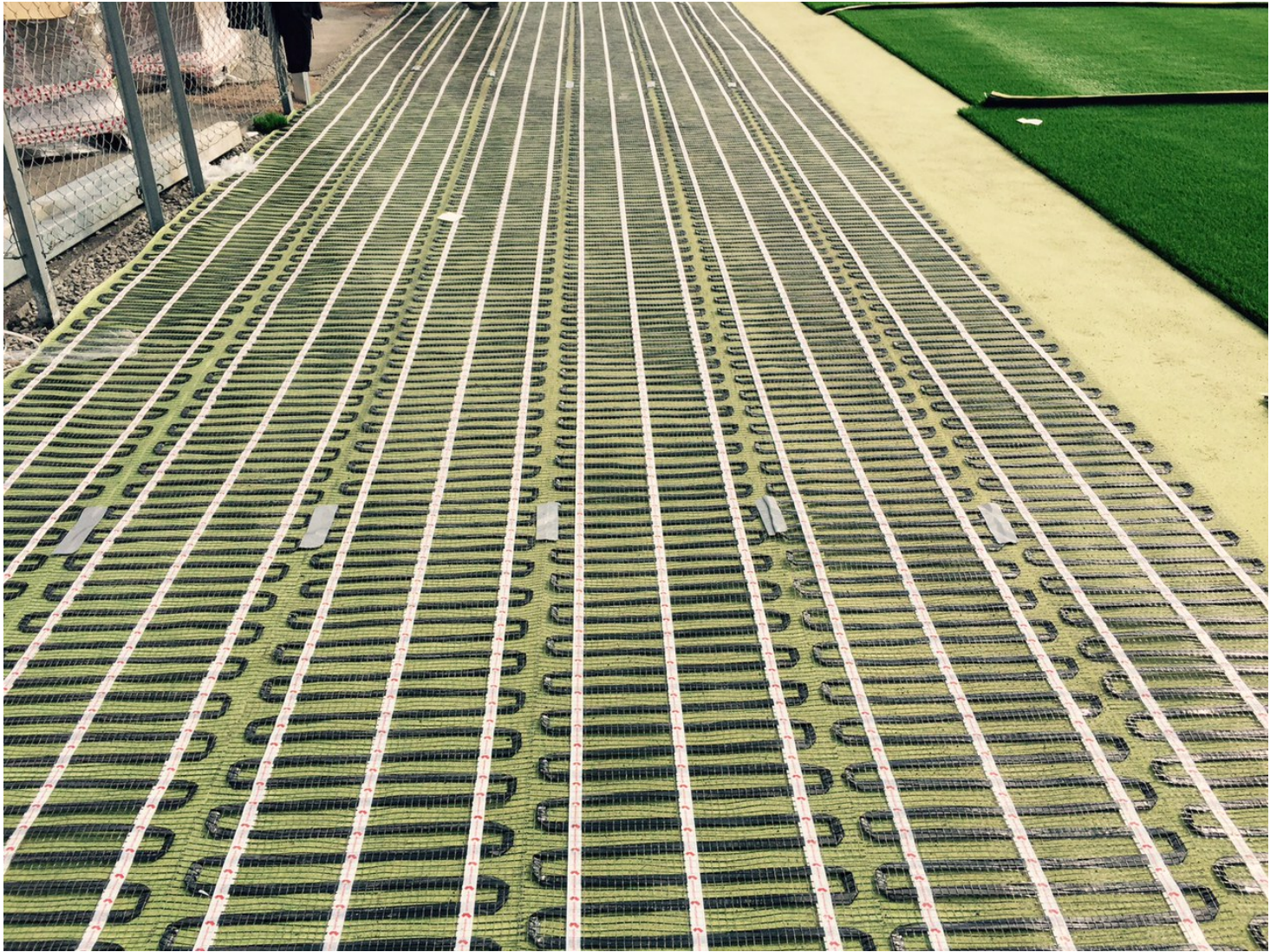
- 1. FAST INSTALLATION (3-4 DAYS)**
- 2. NO MAINTANANCE**
- 3. ZONE BY ZONE CONTROL**
- 4. ON/OFF FUNCTION WHEN WE NEED (TIME OF TRAINING)
(WITH WATER SYSTEM YOU NEED TO STAY ON FOR ALL THE SEASON)**
- 5. 1 CABINET (WITH OTHER ELECTRIC SYSTEM, 2 CABINETS)**
- 6. REMOTE CONTROL, ZONE BY ZONE, SCHEDULE TIME OF TRAININGS,
POSSIBILITY TO DE-ICE ZONE WITH SHADOWS (ALONG STADIUM TRIBUNE)**
- 7. INSTANT TEMPERATURE CONTROL**
- 8. FASTER IN DE-ICING AND SNOW-MELTING COMPARE TO A TRADITIONAL WATER SYSTEM**

PROJECTS WARMSET SCANDINAVIA

GJELLERASEN SOCCER FIELD





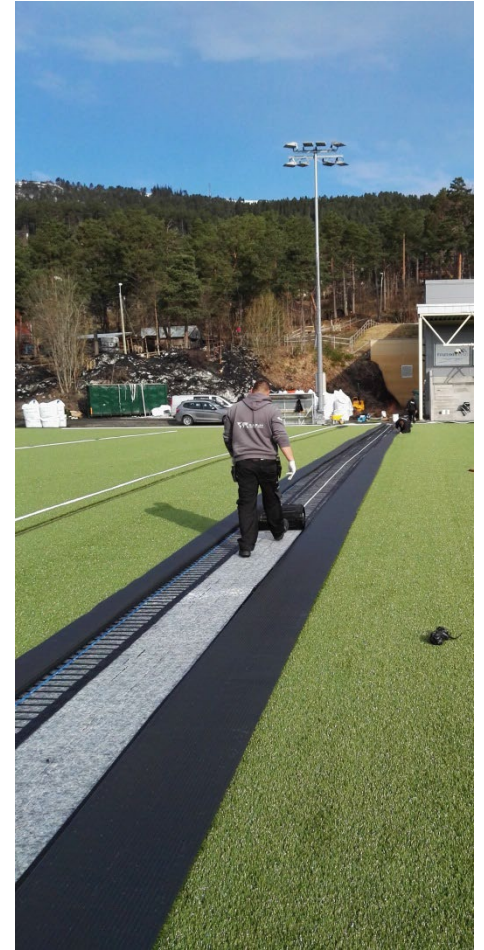


REKNES SOCCER FIELD (MOLDE FC)



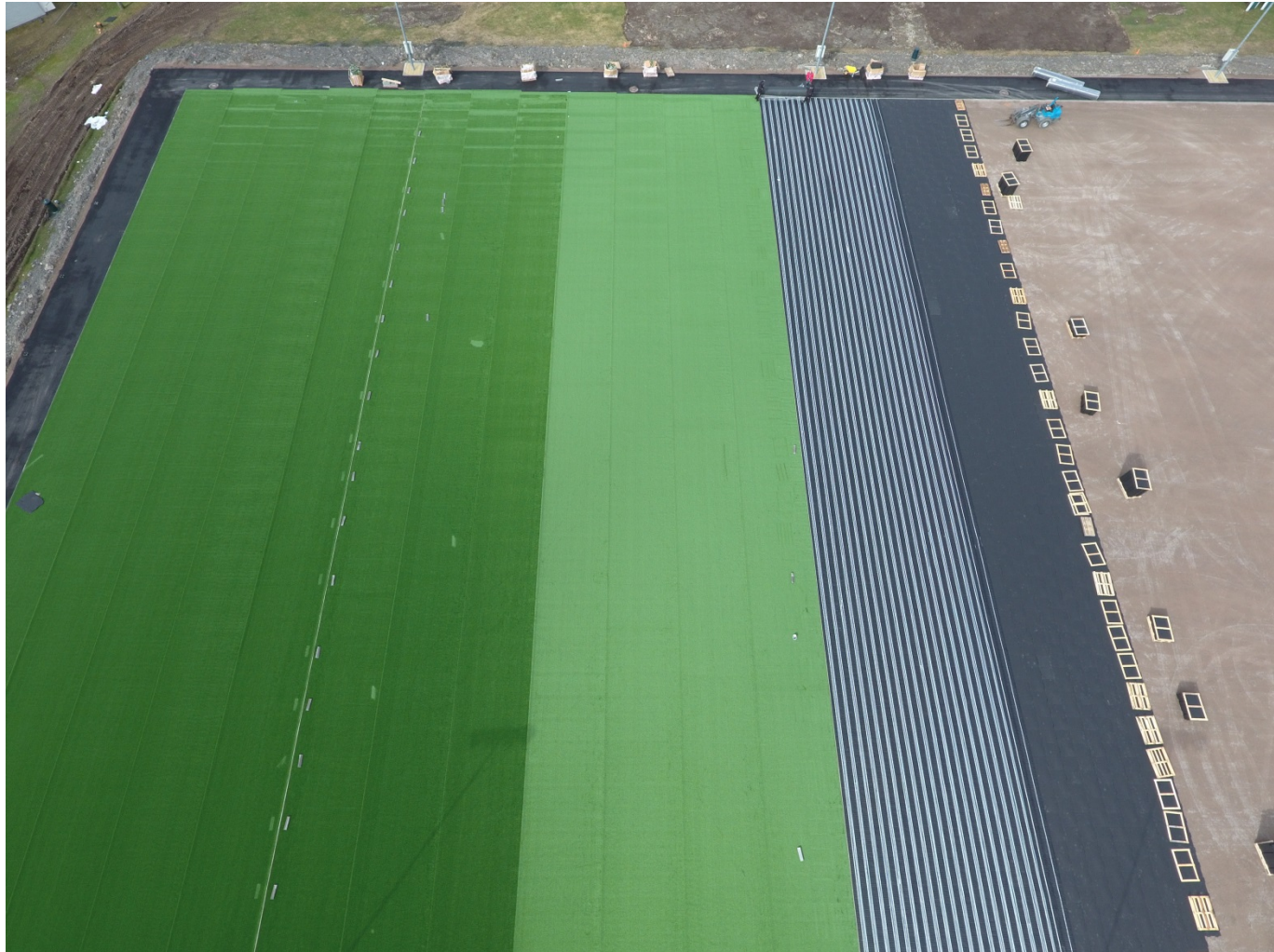




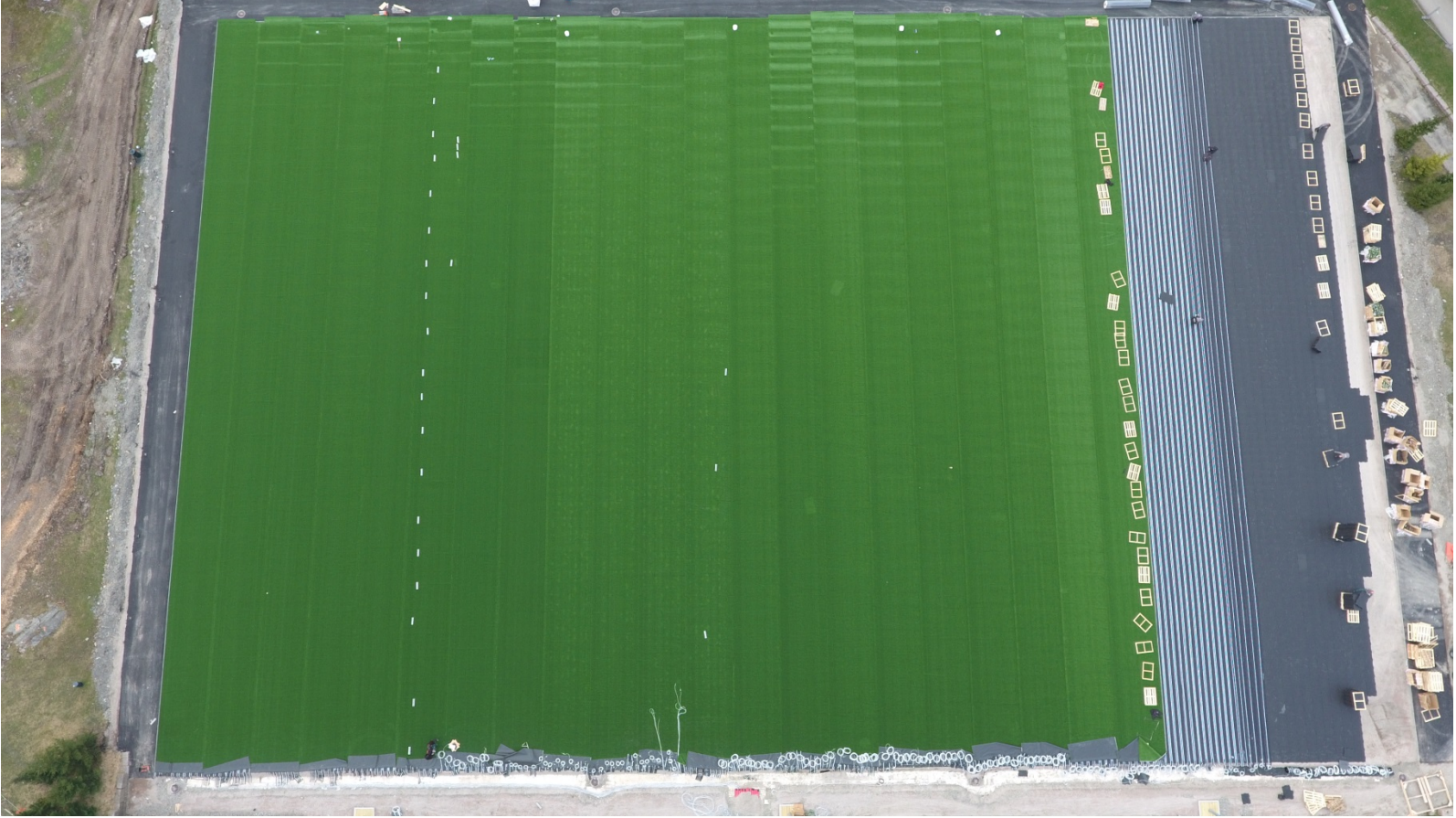




VESTLI SOCCER FIELD







LIDINGO SOCCER FIELD (LIDINGO FC)











KLOFTA SOCCER FIELD







NEW PROJECT WITH LONG SIDE LAYOUT

Luster 



NEW PROJECT WITH LONG SIDE LAYOUT



NEW PROJECT WITH LONG SIDE LAYOUT

Karaganda Arena

